

14<sup>TH</sup> WORLD

# GYMNAESTRADA

LAUSANNE 10-16 JULY 2011

MEET THE MAGIC !

[WWW.WG-2011.COM](http://WWW.WG-2011.COM)

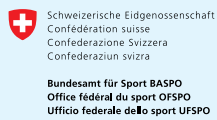


**BULLETIN N° 5**  
**MARCH 2011**

# ENGLISH

---

## BULLETIN N°5 MARCH 2011



# INDEX

<b>WELCOME</b>	4
A word from the Organising Committee	4
<b>WORLD GYMNAESTRADA LAUSANNE 2011</b>	5
National Federations registered for the WG-2011	5
<b>PERFORMANCE VENUES</b>	6
Map of the Performance Venues	6
WG Villages	7
<b>PROGRAMME</b>	10
Detailed information	10
Time schedule	11
Complete Time Schedule	11
National Evenings Schedule	12
Head of Delegation Meeting	12
Educational Forum	14
Conferences	14
<b>ORGANISATION</b>	15
Finances	15
Ticketing	16
Accommodation	17
Media	18
Security	19
Service	19
Medical service	20
Catering	21
Transport	23
Presence on web	24
<b>GENERAL INFORMATIONS</b>	25
For your diaries	26
Directory	26
Contact	27
Copyrights	27
Partners	28



14th WORLD  
**GYMNAESTRADA**  
LAUSANNE 10-16 JULY 2011  
**MEET THE MAGIC !**  
WWW.WG-2011.COM



# WELCOME

## A WORD FROM THE ORGANISING COMMITTEE

March 2011! Less than four months to go before the long-awaited Opening Ceremony of the World Gymnaestrada Lausanne 2011! In this final bulletin we invite you to find out the latest information about the organisation and the schedule for this week-long celebration. Along with our two mascots, Cathy and Jim, we are pleased to welcome you to the banks of Lake Lemman to finally experience this great adventure all together!

As you have already seen, for several months already the entire OC has been working without relent to make this event a success and to ensure that each participant will find themselves in an enchanted world where the magic of gymnastic performances will spread to the streets of Lausanne. Preparations are on track and just a few weeks before the launch it is not only the groups of committees that are finalising their projects, but also an entire city and its region that is preparing to receive each Federation. In this sense we are very proud to be bringing this international event, which will unite no less than 53 nations, to a successful conclusion. This sporting gathering promises some wonderful moments of exchange and emotions during which ethnic diversity and multicultural exchange will be celebrated.

Since the beginning of the year a number of issues have kept us busy; firstly, the final registration of each Federation has been recorded. Furthermore, the WG-2011 official stamp was unveiled in January by the Swiss Post Office and we hope that you find it just as charming as we did. Representing gymnasts' solidarity and the harmony that they display, this stamp is a perfect reflection of the values that an event of this scale aims to promote.

We are eagerly awaiting your arrival in Lausanne and the chance to finally enjoy this extraordinary week with you. A unique opportunity offers itself to all WG-2011 participants and organisers: to excel themselves and give their best whilst upholding sporting values! We are keen to thank you for the trust that you have extended to us so far which motivates us in this final preparatory phase. All that remains is to wish each group a creative rehearsal period and to arrange to meet on 10 July at 4pm for the Opening Ceremony!

The WG-2011 Organising Committee



Official WG-2011 stamp



# WORLD GYMNAESTRADA LAUSANNE 2011

## NATIONAL FEDERATIONS REGISTERED FOR THE WG-2011

The World Gymnaestrada Lausanne 2011 is proud to provide you with an update on the current situation regarding the Federations that will take part in the event this coming July. Currently we can confirm the attendance of 53 nations spanning five continents. The final registrations mean we can estimate the number of gymnasts attending this 14th festival at nearly 20'000! The list of countries that you will find below could grow even longer if a late registration is received from a Delegation interested in joining the WG-2011.

We are pleased to welcome new nations into the WG family, who will take part in our Ambassadors' Programme. We wish the representatives from Algeria, Mongolia and Uruguay a great stay in Lausanne, as well as all the other Federations! Here is the list of Federations that we will have the pleasure of admiring from 10 to 16 July!



# PERFORMANCE VENUES

## MAP OF THE PERFORMANCE VENUES

Here is a short reminder of the different demonstration venues and WG Villages that you will be able to enjoy during the 14<sup>th</sup> World Gymnaestrada. In order to encourage visitors to get around by foot and to promote our efforts in the field of sustainable development, a total of three pedestrian walkways have been designed to link performance venues. Along each of these paths, which will be in the WG-2011 colours, activities will be offered, as well as thematic attractions. In this way the OC encourages all participants, as well as the public, to use the specially created pedestrian paths, which will allow everyone to discover the city of Lausanne.

the Gymnastic Road – the Magic Road – the sustainable development Road.



# WG VILLAGES

During the entire festival week, gymnasts and public alike will be able to discover the WG-2011 Villages at the Bellerive site and at the Malley Sports Centre. After the different performances that will take place during the day, people can let themselves be carried away by the planned activities and concerts and also enjoy the festive atmosphere in Lausanne.

Next to the WG Village in Bellerive is the Bellerive swimming pool with its various games and relaxation areas, which will host the Youth Village in particular. The OC would like to inform you that entrance to the swimming pool will be free to all WG-2011 accredited persons.

## WG VILLAGE OF BELLERIVE

Each evening on the banks of Lake Lemman, the Bellerive Village will welcome all participants to an exciting get-together with great entertainment. In this WG Village dedicated to relaxation and celebration it will be possible to eat at the various stands installed especially for gymnasts and the public. From Monday to Saturday you will be able to attend no less than three concerts per evening at the Bellerive site.

Furthermore, special events will complete the programme each evening of the week. On Wednesday, 13 July you will be able to see a world record attempt on the swinging rings. No less than 80 gymnasts will excel themselves and try to beat a record set by the Swiss Gymnastics Federation: they must complete 500 double somersault dismounts (that is 1'000 rotations) in 750 seconds. All these gymnasts, if they succeed with these acrobatics, will be able to register this record in the famous *Guinness Book of Records*.

### OPENING HOURS

from 17:00 to midnight

### PRICE

free entrance for each person provided with a participant card or a WG-2011 accreditation.

Here is the program of the concerts you can appreciate from 11 till 16 July!

#### MONDAY 11.07

#### TUESDAY 12.07

#### WEDNESDAY 13.07

17h00-18h00	DJ	DJ	DJ
18h00-19h00	<b>Linchen*</b>	<b>Stonecity</b>	<b>KOLO*</b>
19h00-20h00	DJ	DJ	DJ
20h00-21h00	<b>Raggumbians*</b>	<b>My Name is Georges</b>	<b>Stevans*</b>
21h00-22h00	DJ or animation	DJ or animation	DJ or animation
22h00-23h00	<b>Motown HEMU</b>	<b>Emile et Images</b>	<b>Groove Convention</b>

#### THURSDAY 14.07

#### FRIDAY 15.07

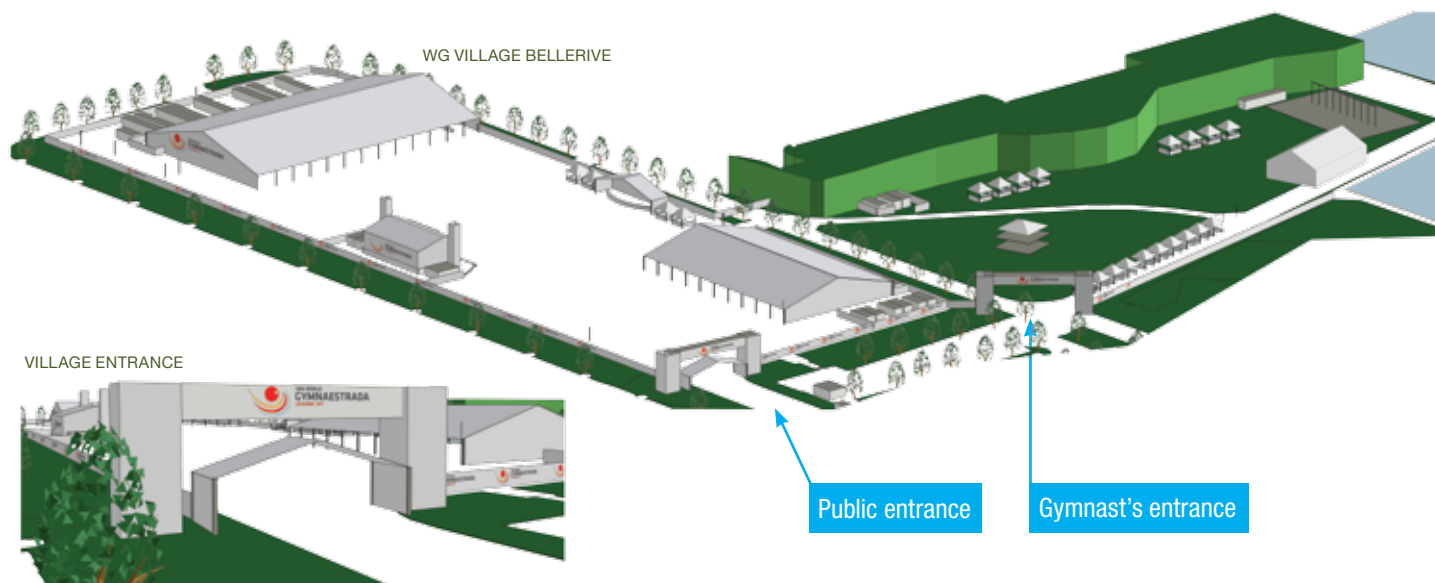
#### SATURDAY 16.07

17h00-18h00	DJ	DJ	
18h00-19h00	<b>Kind King Zoo</b>	<b>Fuse Factory*</b>	
19h00-20h00	DJ	DJ	DJ
20h00-21h00	<b>Open Season</b>	<b>The Ravens*</b>	
21h00-22h00	DJ or animation	DJ or animation	
22h00-23h00	<b>Few Good Men</b>	<b>Moonraisers</b>	<b>ABBA MANIA</b>



\*In collaboration with Les Fêtes de la Musique

## MAP OF THE WG VILLAGE



## YOUTH VILLAGE

The Youth Village will be located within the Bellerive swimming pool complex next to the WG Village and will be exclusively intended for WG-2011 participants. In this playground dedicated to fun and amusement, youngsters will be able to discover activities such as a climbing wall and many others besides. As well as the many attractions on offer for the enjoyment of one and all, the swimming pools will also be open for free access to everyone. The OC reminds you that in order to be able to enjoy these attractions, it is compulsory that groups be accompanied by responsible adults.

### OPENING HOURS

From 14:00 to 22:00, **from Monday 11 July to Friday 15 July**  
(opportunity to have a swim until 20:00).

### AGE

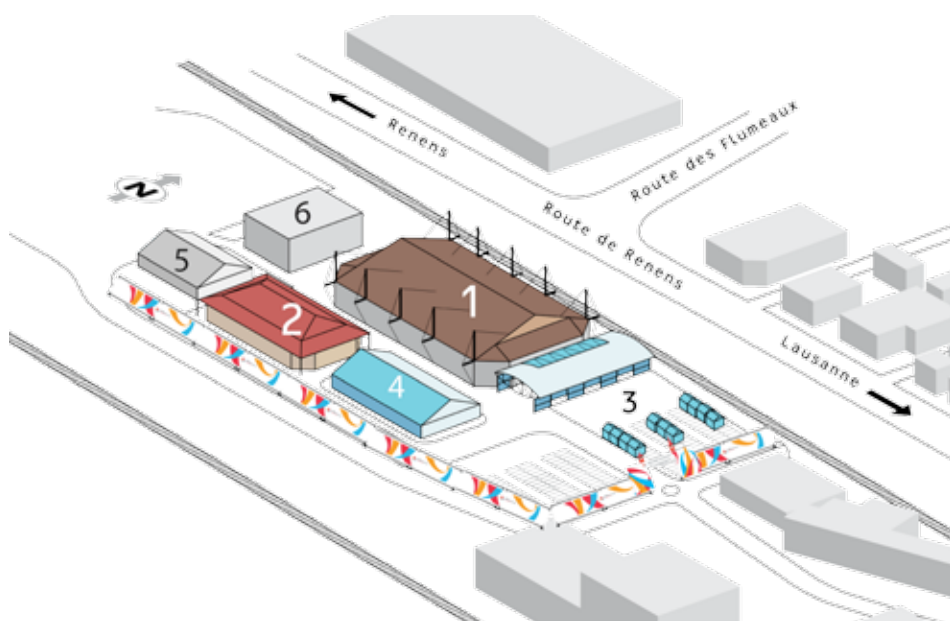
entrance until 16 years old.

In this Youth Village, there will also be activities for the youngest adapted to their age under the watchful eye of the responsible.



## WG VILLAGE OF MALLEY SPORTS CENTRE

At the Malley Sports Centre site, the WG Village will allow both gymnasts and the public the chance to meet and enjoy the attractions and music in line with the National Evenings theme. Each evening it will be possible to eat before or after the different National Evenings as well as the FIG Galas at the canteens.



1. Malley Hall

2. Odysée Hall

3-4. WG Villages

5-6 Warm-up room and changing rooms

## CITY ENTERTAINMENT (PLACE DE L'EUROPE)

At the Arches in Place de l'Europe at the very heart of Lausanne, a party awaits you on each evening during the week. In collaboration with the Pool Lausanne La Nuit, you will be able to enjoy entertainment scheduled from **6pm to midnight**, in particular thanks to Lausanne nightclub DJs. For those holding WG-2011 participant or accreditation cards there will also be the possibility to gain free entry to various Lausanne nightclubs\* after 11.30pm (ID compulsory : minimum age 18).

\* **Partner clubs** : D!Club, Cult Club, Mad, Atelier Volant, Mica, Zinc, Loft Club. For security reasons if a club is full those with accreditation may not be able to gain entry.

For those who would like to visit the Olympic Museum during their stay in Lausanne, the venue has decided to offer each participant (in possession of their WG-2011 accreditation or participant card) a discounted entry price. For young people aged 16 and under, entrance will be free and for adults the price will be 5 CHF (around €3.5) instead of 15 CHF. Come along and take advantage of this offer that will allow you to discover the Olympic Museum and its exhibitions, in particular the FIG Exhibition that will be inaugurated in July, as well as its park on the banks of Lake Lemman.



# PROGRAMME

---

## DETAILED INFORMATION

---

For the Group Performances, Large Group Performances, City Performances and the National Evenings, Head of Delegation will receive, prior to the World Gymnaestrada, a checklist containing all the useful information needed for the smooth running of the event. The official schedule for the Group Performances and the Lausanne City Performances as well as the timetable for lunch will be distributed to Federations two months before the event at the latest.

Among the content of these checklists will be

- Access plan for the various demonstration venues;
- Timetable to follow before the Performances (demonstration venue, changing rooms, warm-up room access hours, etc.);
- Procedure for removing equipment; etc.

In this regard, organisers hope to assist the work of group managers.

For the Opening and Closing Ceremonies, a similar checklist will be available so that each manager can be aware of the following points :

- Waiting places/preparation timetable;
- Procession route for the Parade of Nations (Opening Ceremony);
- Space set aside for each Federation in the stadium terraces.

The participant cards/ accreditation cards will be issued to each Head of Delegation on arrival between 4 and 9 July. A meeting will be set up at the Accreditation centre at the College of Beau-lieu Lausanne for each Head of Delegation and you will be informed of this in the coming weeks.

The OC informs you that for organisational reasons, the timetable for the City Performances at the different sites will be drawn up by start time. Each group will be given a general start time in the knowledge that the order of performance will not be set before the teams' arrival at each site. This means that the running order of the groups programmed for the same hour slot will be set on the basis of the order of their arrival or by mutual agreement.

The OC will try their best to fulfil requests regarding the number of City Performances given by each group. However, it will not be possible to guarantee that these wishes will be fully honoured!



# TIME SCHEDULE

## COMPLETE TIME SCHEDULE

Here are the time schedules of the WG-2011 week:

	Sunday 10.07.2011	Monday 11.07.2011	Tuesday 12.07.2011	Wednesday 13.07.2011	Thursday 14.07.2011	Friday 15.07.2011	Saturday 16.07.2011
10:00		Large Group Performances rehearsal	Group Performances	Group Performances	Large Group Performances	Group Performances	
11:00		Group Performances	Group Performances	Group Performances	Large Group Performances	Group Performances	FIG Gala
12:00	Lunch	Educational Forum	Educational Forum	Educational Forum	Educational Forum	Educational Forum	
13:00	Lunch		Large Group Performances	Group Performances	Large Group Performances	Group Performances	FIG Gala
14:00	Lunch		Educational Forum	Educational Forum	Educational Forum	Educational Forum	
15:00			Large Group Performances	Group Performances	Large Group Performances	Group Performances	
16:00			Large Group Performances	Group Performances	Large Group Performances	Group Performances	
17:00	Opening Ceremony		Large Group Performances	Group Performances	Large Group Performances	Group Performances	
18:00			Large Group Performances	Group Performances	Large Group Performances	Group Performances	Closing Ceremony
19:00		Austria	Germany	PAGU	The Netherlands	Japan	FIG Gala
20:00		Switzerland	South Africa	Nordic Countries	Japan		Closing Party (Bellerive)
21:00							
22:00		France	Italy	Greece-Spain	English-speakers Countries	Japan	FIG Gala

### Sites:

						<i>Pontaise Olympic Stadium</i>
						<i>Beaulieu Lausanne</i>
						<i>Malley Sports Centre</i>



## NATIONAL EVENINGS SCHEDULE

Here is the definitive programme of the National Evenings taking place on the Malley Sports Centre :

		<b>Odysée</b>		<b>Malley</b>
<b>Monday</b>	18:15		18:30	
	21:00		21:15	
<b>Tuesday</b>	18:15		18:30	
	21:00		21:15	
<b>Wednesday</b>	18:15	PAGU	18:30	Nordic countries
	21:00	 	21:15	
<b>Thursday</b>	18:15		18:30	
	21:00	English speaking countries	21:15	

## HEAD OF DELEGATION MEETING

The OC invites all Head of Delegation to take part in this meeting that will give each person the opportunity to express their needs and any potential problems that could arise during the event. Each Head of Delegation can also share their experiences with the other managers, the OC and the FIG members. Together they will aim to ensure that this week event is a success, as well as a moment for celebration and exchange for one and all. The OC would like to remind all Delegations that meetings will be held in English.

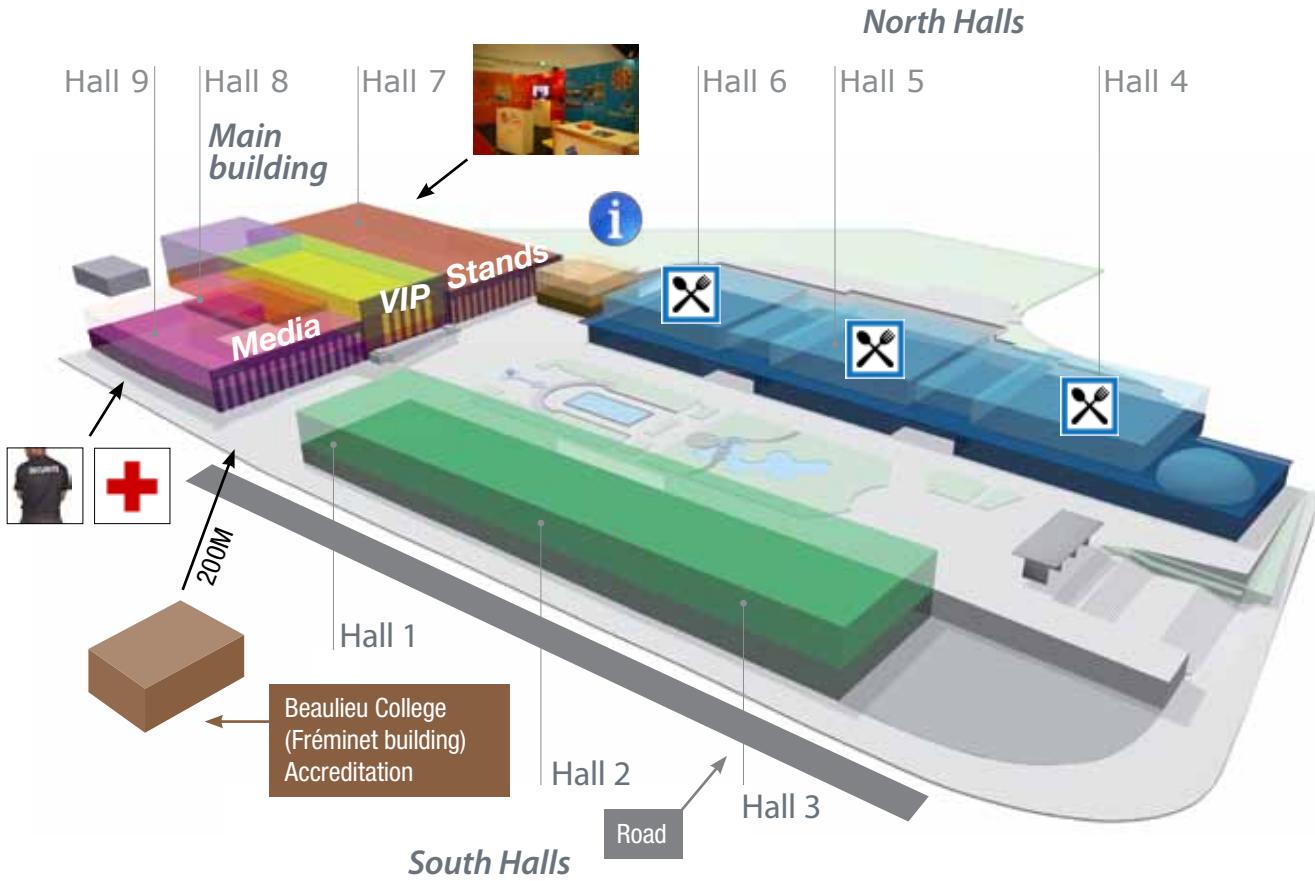
### **PLACE**

**Beaulieu Lausanne**, Main building, third floor.

### **TIME SCHEDULE**

Sunday 10 July, **from 10:00 to 11:00**,  
from Monday 11 July to Saturday 16 July, **from 8:30 to 9:30**.

**BEAULIEU LAUSANNE**



**IN THE MAIN BUILDING OF BEAULIEU LAUSANNE:**

**THIRD FLOOR**

FIG and OC office  
HoD Room (Head of Delegation meeting)  
Room for Conference

**SECOND FLOOR**

Press and Media Centre  
VIP area and VIP catering  
OC area

**FIRST FLOOR (UPPER FLOOR)**

Federations stands and exhibitors  
Hall 7 20x40m  
Hall 8 14x14m  
Hall 9 Educational Forum

**LOWER GROUND FLOOR**

Medical service  
Public Restaurant

**IN SOUTH HALLS (HALLS 1, 2, 3):**

**GROUND FLOOR**

Zones for Groups Performances

**BASEMENT**

Changing rooms  
Warm-up room  
Zone for the storage of gym equipment

**IN NORTH HALLS (HALLS 4, 5, 6):**

**FIRST FLOOR**

Zones for Groups Performances  
Changing rooms  
Warm-up room

**GROUND FLOOR**

Gymnasts' Restaurant

## EDUCATIONAL FORUM

---

Registration for the Educational Forum has been a real success and, as was already announced in the previous Bulletin, **each presentation may only be presented once.**

For those who would like to attend these presentations, the OC reminds you that the Educational Forum is not only for trainers and other group managers, but is open to all participants (children, adults, senior citizens, disabled)! A detailed programme for these presentations will be available in the Festival Guide.

**We encourage everyone to actively participate in the different presentations!**

### Reminder for presenters :

- Presentations should be given in English.
- Following FIG approval of the presentation programme, each presenter will receive confirmation of their participation. A short biography will be directly requested from presenters **before** the World Gymnaestrada so that this can be published on the WG-2011 website and made available in hard copy at the entrance to the hall.
- A discussion space with light refreshments will be provided at the entrance to the presentation hall. This space will allow presenters to display information about their presentation (posters for example), to answer questions and to talk with participants. **Therefore the organisers would like to ask that presenters be available in this space at the end of their presentation.**



## CONFERENCES

---

As a supplement to the Educational Forum, a series of five Conferences shall be organised on the Beaulieu Lausanne site from Monday 11 to Friday 15 July **from 11am to 12pm.**

Led by distinguished speakers and specialists in their field, these Conferences will allow you to discover new topics related to sport in all its diversity thanks to varied subjects such as:

- World Gymnaestrada history and philosophy
- Disabilities within sport
- Nutrition and sport
- Connection between Sport for All and elite sport
- Racism within sport

The detailed programme will be available in the Festival Guide. The organisers strongly encourage World Gymnaestrada participants to attend these Conferences!



# ORGANISATION

---

## FINANCES

---

We would like to remind you that all services ordered by participants must be paid before **30 April 2011 at the very latest**. You should receive an invoice in the coming days and you might already have received it! We thank all Delegations in advance for respecting the deadlines imposed in accordance with FIG regulations.

### ATTENTION

Accreditations shall be issued on site only once payment has been made for all services ordered. We remind you that without proof of the correct payment, no participant cards, tickets or other services ordered will be delivered.

### REMINDER OF THE BANK DETAILS OF THE WG-2011:

#### ADDRESS

Association World Gymnaestrada Lausanne 2011  
PO Box 108  
1018 Lausanne 18  
Switzerland

#### ACCOUNT

R 5152.64.53

#### IBAN

CH43 00767 000R 5152 6453

#### BANK

Banque Cantonale Vaudoise  
Place St. François 14  
PO Box 300, 1002 Lausanne (Switzerland)  
CCP 10-725-4

#### SWIFT/BIC

BCVLCH2LXXX

#### VAT NUMBER

714 915

**We would remind you that you have to pay any bank charges. The OC must receive the exact net amount in Swiss francs. The possible differences must be paid in Lausanne at your arrival.**



# TICKETING

Having received the requests made by the Federations we registered the tickets ordered and after having established quotas for the most popular Evenings, the allocated tickets have been confirmed to the Federations concerned.

## Ticketcorner

Any requests for additional tickets can be made to Ticketcorner or at different points of sale (in Switzerland). According to ticket availability, one purchaser can order a maximum of 10 tickets. Over the Internet tickets can be purchased by credit card, which will incur a supplementary payment fee.

Further details can be consulted in the information section of the WG-2011 website if required : [www.wg-2011.com/ticketing](http://www.wg-2011.com/ticketing).

**For further information :**  
[info@wg-2011.com](mailto:info@wg-2011.com)

**Ticket prices have been changed as follows :**

	Adult	Retired and Disabled	Youth 11-16	Under 11 Years old
<b>Pontaise Olympic Stadium</b>				
Opening Ceremony	45.-	45.-	45.-	25.-
Closing Ceremony	30.-	30.-	30.-	15.-
Large Group Performances - 1 day	15.-	10.-	0.-	0.-
<b>Beaulieu Lausanne</b>				
Group Performances - week pass	100.-	80.-	40.-	0.-
Group Performances - 1 day	25.-	20.-	10.-	0.-
Group and Large Group Performances - 1 day	25.-	20.-	10.-	0.-
<b>Malley Sports Centre</b>				
National Evening - one Show	35.-	35.-	35.-	35.-
Seats close to the screen - one Show	25.-	25.-	25.-	25.-
FIG Gala - one Gala	40.-	40.-	40.-	40.-
Seats close to the screen - one Show	30.-	30.-	30.-	30.-

\* All price are displayed in Swiss Francs (CHF)

# ACCOMODATION

## CATHY AND JIM TAKE YOU THROUGH THE RULES FOR ACCOMMODATION

In order to offer everyone a pleasant stay, Cathy and Jim have put together a guide about «good conduct in participant accommodation». We want gymnasts, group managers, accompanying persons or volunteers working in the accommodation to enjoy this week to the full. In order for this to happen, here are a few rules that we ask you to respect for your wellbeing and that of others.

1. Access to schools is reserved to World Gymnaestrada participants. Please keep your accreditation with you so that you can easily be identified by those in charge of each building.
2. In order to facilitate the supervision of each building, each site shall only be accessible by the main entrance. All other access points will be closed as a security measure.
3. Each group leader is fully responsible for their group(s).
4. **Smoking is strictly forbidden** inside the building compounds. This rule also applies to the possession or use of drugs. Alcohol consumption is permitted near the refreshment areas and dining areas but is formally **prohibited in classrooms**. The WG-2011 supervision team reserves the right to discipline anyone who fails to respect this. We encourage each participant to respect those around them and to act appropriately in each accommodation site.
5. Please respect the equipment that is put at your disposition. Please contact the WG-2011 supervision team immediately in the event of any damage occurring.
6. Each person is obliged to respect the place where they are staying and to keep the classrooms clean. Before your departure, a representative of the WG-2011 supervision team as well as a manager of the group in question will inspect the state of each classroom. In the event of damage, loss or excessive untidiness, the group will be held responsible.
7. Rest time is valuable and should be respected. If you return to your accommodation late at night please respect those around you.
8. Access to the gyms is reserved for group training; only indoor shoes may be worn in these areas.
9. For organisational reasons, we ask you to respect the times for breakfast and showering. If necessary, changes to these times can be made. Please speak to the manager of each site so that they can take account of your proposal.
10. The WG-2011 has committed to organising an event that respects the environment. Alongside Cathy and Jim please help us to keep our commitment by using the correct rubbish bins that will be put at your disposition.
11. Always keep an eye on your valuables. In the event of loss or theft in the school, the WG-2011 supervisory team will not be held responsible. In order that everyone can have a pleasurable time, please respect other peoples' property.

Cathy and Jim as well as the Accommodation Committee thank you for respecting these few rules and wish you a wonderful World Gymnaestrada.



# MEDIA

---

## PRESS SERVICE

During the WG-2011, journalists, photographers and reporters will find optimal conditions in Lausanne to allow them to produce quality work. The OC and FIG's human and technical resources have already been mobilised for this extraordinary event.

Media wishing to gain accreditation for the WG-2011 must go to the FIG website and register on the **Media** page. Federations participating in this event have been invited to send their press correspondents, professional or otherwise, in order to gain good media coverage in each country and each region through the daily press and local magazines.

The OC Media team as well as the FIG representatives will be helping the media during the whole celebratory week. The media will be kept informed thanks in particular to press conferences, daily press releases distributed directly from the Beaulieu Lausanne press centre and via a Press Meeting that will take place each morning. Rooms exclusively reserved for journalists and photographers will be accessible to all those with Media accreditation. Each space will be fully equipped.

In order to cover the different performances as a whole, a Media tour will be at the disposition of the media in each of the demonstration halls. There will be areas reserved for the press at the Malley Sports Centre and the Pontaise Olympic Stadium where the National Evenings and FIG Galas, the Large Group Performances and the Opening and Closing Ceremonies will be held respectively.

## RECOMMENDATION

<b>Accreditation</b>	Each request needs to be done on the FIG website : <b><a href="http://www.fig-gymnastics.com">http://www.fig-gymnastics.com</a></b>
	Accreditations will be available on the Press Reception desk in the College of Beaulieu Lausanne (p.13)
	Photographers and journalists, who will not be in possession of a professional press card, must show a document, duly signed by their federation, confirming the « media » function of the said person.
<b>Media Accommodation</b>	Contact Lausanne Tourism : <b><a href="mailto:wg-2011@lausanne-tourisme.ch">wg-2011@lausanne-tourisme.ch</a></b>

# SECURITY

---

Below is some information about the security system that will be implemented across WG-2011 venues, as well as in the accommodation sites.

In order to better coordinate any problems which might arise, an emergency telephone number will be available 24 hours a day to all participants. This number will be directly connected to the WG-2011 Call Centre and will be responsible for dealing with each person's needs according to the site concerned. You will be given this emergency number in the coming months; it will also be found in the World Gymnaestrada Lausanne 2011 Festival Guide and on your accreditation.

Security Headquarters shall be located at Beaulieu Lausanne. All the security partners, including the police, fire brigade, army, security team and the OC will be present at this site. At the other performance venues, as well as the WG Villages, security branches will be responsible for managing potential inconveniences and answering questions from participants and the public.

At the accommodation sites, security will be provided by an agreement between the private security partners (Securitas) and public security (the police) as well as by the volunteers themselves. All measures will be taken so that each person can enjoy this World Gymnaestrada week to the maximum.

For any object lost at the event sites, stands at each site as well as the general information stand at Beaulieu Lausanne will be at your disposition and will centralise all misplaced objects. Every evening of the week, after the end of the festivities, the lost objects will be repatriated in the main information stand on the site of Beaulieu Lausanne.

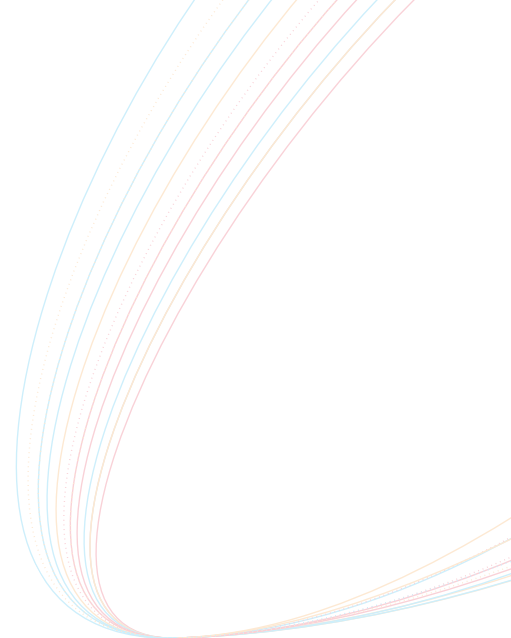
# SERVICE

---

## TELECOMMUNICATION

Each Head of Delegation and group responsible will receive a mobile phone for the WG-2011 week. The use of these phones will enable responsible to get all the OC official information. If necessary, each group will be informed about the safety instructions if a problem had to arise. Furthermore, each mobile phone will have some useful numbers prerecorded. They could help you during your stay in Lausanne.

More information concerning the distribution of this material will follow in the next weeks.



## MEDICAL SERVICE

---

The Medical centre for the WG-2011 will be located at Beaulieu Lausanne (see p. 13). There will be a medical stand at all other event sites for gymnasts and the public. If a medical problem occurs at the accommodation sites outside Lausanne, the hospitals at Morges and Vevey are easily accessible to respond to possible emergencies.

The network of duty doctors for the Lausanne region will also take care of possible medical problems.

The OC reminds you that each participant must have valid insurance in Switzerland covering emergency fees in case of illness, accident or repatriation from arrival in Switzerland until departure. It is the responsibility of each Head of Delegation to ensure that all measures have been taken so that each gymnast is in possession of an insurance certificate (or a valid medical insurance card) during their stay.

Similarly, the OC would once more like to draw to your attention the fact that it is necessary to hold valid insurance to obtain a Swiss visa. We remind you that the OC offers you an insurance policy that fulfils all of these criteria. Insurance can be subscribed through the OC.

For further information and insurance offer :

[www.wg-2011.com/insurance](http://www.wg-2011.com/insurance)



# CATERING

---

## BREAKFAST

Breakfast each day between Sundays 10 to 17 July is included for all participants who have paid for the «Accommodation in schools» package.

Schedule : **from 6:00 to 9:00** each morning.

## LUNCH

To save time and avoid long queues, a meal timetable organised in accordance with group performances shall be proposed and printed in the Festival Guide. Vouchers for 7 lunches must be ordered upon final registration. **Please note that it will not be possible to buy these meals on site.** Snacks and light refreshments will be available to participants to buy during the day.

For groups that have planned an excursion during the week, a lunch box can be taken to replace the meal. The request must be made during the reservation of the excursions.

## EVENING MEAL

Meals will be available at the Bellerive site and the Malley Sports Centre. Various stands will offer a wide choice of dishes.

All food and drink on sale at the WG-2011 venues will be served in return for vouchers offered in the form of cards to the value of 10 CHF (minimum total) comprising ten 1 CHF tickets. These cards can easily be kept inside the accreditation pouch. We suggest that you order these in advance during the final registrations (**30 April last deadline**) and they will be given to you at the same time as your accreditation. During the event, it will be possible to purchase vouchers at various desks on the sites.

## DRINKS

All drinks will be served in returnable glasses (surcharge of 2 CHF when buying the first drink, which will be reimbursed if the cup is returned). Some of the cups will bear the colours of the Gymnaestrada and these can also be kept as a souvenir !

The Catering committee is pleased to welcome you and is putting everything in place to provide you with excellent quality daily meals at an affordable price.



## LUNCH MENU OF THE WORLD GYMNAESTRADA LAUSANNE 2011

### SUNDAY 10 JULY 2011

#### Meat menu

Breast of chicken, lemon sauce  
Rice with vegetables

#### Vegetarian menu

Nasi Goreng vegetarian

### MONDAY 11 JULY 2011

#### Meat menu

Beef stew with mushrooms  
Cavatellis in a vegetable stew

#### Vegetarian menu

Cavatellis in a vegetable stew

### TUESDAY 12 JULY 2011

#### Meat menu

Sliced chicken  
Casimir rice

#### Vegetarian menu

Potato & vegetable hotpot

### WEDNESDAY 13 JULY 2011

#### Meat menu

Grilled veal sausage,  
brown sauce  
Mashed potato

#### Vegetarian menu

Äpler macaronis (vegetarian)

### THURSDAY 14 JULY 2011

#### Meat menu

Sliced beef Stroganoff  
Pasta (spirals)

#### Vegetarian menu

Paëlla with vegetables

### FRIDAY 15 JULY 2011

#### Meat menu

Barbecued meat balls  
Mashed potato & vegetables

#### Vegetarian menu

Madras fruit curry  
Basmati rice

### SATURDAY 16 JULY 2011

#### Meat menu

Chicken Mah-mee

#### Vegetarian menu

Spaghetti  
tomato sauce

#### REMARK:

Each menu is accompanied by a salad.

The type of salad changes every day.

These menus may be subject to modification.



# TRANSPORT

---

In order for us to better organise your stay, here is some final information about transport.

## **ARRIVAL IN AND DEPARTURE FROM SWITZERLAND**

### **BY AIRPORT IN GENEVA OR ZURICH**

Federations wishing to benefit from travel arrangements between the airport and their accommodation site must request this at the time of registration and prior to **30 April**. The OC guarantees you the quickest possible transfer to your accommodation site whatever time you arrive in the airports.

### **BY TRAIN**

Transfers from Lausanne station to the accommodation sites is provided and organised by the OC. Lausanne station is linked to all cities in Switzerland by hourly train connections and to all European capitals several times a day. Within the framework of sustainable development the OC recommends that you use public transport to travel to Lausanne.

### **BY BUS**

If you are using this means of transport to travel to Lausanne, the OC needs to know if your buses will stay in Lausanne (in Switzerland) for the week for organisational reasons. For your information, it will not be possible to park these buses close to the accommodation sites. A project is being developed to park them at the military barracks in Bière about 30 kilometres from Lausanne. We also remind you that Delegations are not authorised to use their own buses to travel to the event sites.

### **BY CAR**

There is no car parking availability next to the accommodation sites and you have to pay to park your car in Lausanne. Each participant will receive an accreditation that will allow them to travel in a large radius using public transport without extra cost. The OC therefore recommends that you use this accreditation to move around during the event.

Welcome stands will be installed at Geneva and Zürich airports as well as Lausanne train station to provide information to each group and their participants.

### **DURING YOUR STAY IN LAUSANNE**

Many public transport routes operate near your accommodation site. Precise information will be available there to assist you.

For your own comfort and enjoyment, we thank you for following the instructions issued to you and advice that you allow a sufficient amount of time for your travel between sites. The performances at the Malley Sports Centre and Bellerive will finish at 11.30pm allowing you to return to your accommodation site by public transport.

The Transport Committee thanks you for following these recommendations in order to ensure that traffic for the WG-2011 is well organised.



# PRESENCE ON WEB

## VIDEO GAME

Discover the different public squares in and around Lausanne, which will host the stages for the City Performances through this 3D video game. After the Flon district, a new game platform is now available. Take a walk down la rue Centrale with Cathy and Jim now. Only one address to play : [www.wg-2011.com/game](http://www.wg-2011.com/game)



## FACEBOOK

Become a friend of Cathy and Jim and follow their adventures! To find them, type « **Cathy La Mascotte** » and « **Jim La Mascotte** » in the research Facebook bar. Follow the official page, by clicking on « I like » : [www.facebook.com/wg2011](http://www.facebook.com/wg2011).

Find and share all the official information through this page. Join also the « World Gymnaestrada Lausanne 2011 » official group to keep up to date with all the activities of the event. Do you need help on Facebook? Cathy and Jim are often connected, don't hesitate to write them !



## YOUTUBE

Videos of the World Gymnaestrada Lausanne 2011 will be published on the Youtube Channel on the following link : [www.youtube.com/user/WorldGymnaestrada](http://www.youtube.com/user/WorldGymnaestrada)

## WG-2011 IPHONE APPLICATION

For all iPhone owners, this free application will allow you to find out the WG-2011 news and timetables directly from your mobile phone. The photo gallery will allow you to experience the event in images and share its snapshots. You can also discover an interactive map that will help you to get around the city of Lausanne. Application launch is planned for June.

# GENERAL INFORMATIONS

## “WORLD OF GYMNASTICS” IN A PHILATELIC WAY

During the World Gymnaestrada a philatelic collection about gymnastics will be showed in Beaulieu Lausanne. Dutch Danny Jimmink started this collection in 1995, took several “prix d’honneurs” within European exhibitions and became Belgium Grand Prix winner 2008 in the thematic class.

The collection tells about nearly all disciplines in gymnastics from recreational to competitive and of course several festival activities. But also less popular themes are mentioned like the political influence within gymnastics and a few ethical questions.

Thematic philately has many things in common with gymnastics. In a gymnastic performance each movement and each artistic combination counts; the same goes for a philatelic presentation: each document has its own particular importance.

A collection of stamps on the theme of «the world of gymnastics» should not be limited to an exhibition of stamps depicting gymnasts. There should ideally be a diverse range of postal elements thanks in particular to telegrams, postmarks and little booklets. In this colourful exhibition the public will be able to discover the WG-2011 stamp, as all as an impressive palette of gymnastic motifs.



## FOR YOU DIARIES

---

**30 April 2011** \_\_\_\_\_ Payment of total account balance  
Send the music of all the groups to Skynight  
Send recording of production for lighting

**May 2011** \_\_\_\_\_ The official program sent to all Federations

**10-16 July 2011** \_\_\_\_\_ **World Gymnaestrada Lausanne 2011**

## DIRECTORY

---

Do you have any questions? Concerning the different subjects being discussed in this Bulletin, here is the email address that can help you :

- Ticketing \_\_\_\_\_ [www.ticketcorner.ch](http://www.ticketcorner.ch)
- Hotels \_\_\_\_\_ [wg-2011@lausanne-tourisme.ch](mailto:wg-2011@lausanne-tourisme.ch)
- Registration \_\_\_\_\_ [office@wg-2011.com](mailto:office@wg-2011.com)
- Media \_\_\_\_\_ [media@wg-2011.com](mailto:media@wg-2011.com)
- Project with the logo WG-2011 \_\_\_\_\_ [validation@wg-2011.com](mailto:validation@wg-2011.com)
- National Evenings- Light and Sound \_\_\_\_\_ [wg-2011@skynight.com](mailto:wg-2011@skynight.com)
- Federations stands \_\_\_\_\_ [wg-2011@beaulieu.ch](mailto:wg-2011@beaulieu.ch)
- Transport \_\_\_\_\_ **Bus and Metro**, [www.t-l.ch](http://www.t-l.ch)  
**Train**, [www.cff.ch/wg-2011](http://www.cff.ch/wg-2011)

And for all other questions, you already have our email address: [info@wg-2011.com](mailto:info@wg-2011.com)



## CONTACT

---

We are at your disposal for all information questions. Please do not hesitate to contact us; we will be pleased to help you.

World Gymnaestrada Lausanne 2011  
PO Box 108 - 1018 Lausanne 18 - Switzerland  
Tel: +41 (0)848 94 20 11 **(NEW)**  
Fax: +41 (0)21 315 41 42  
Email: [info@wg-2011.com](mailto:info@wg-2011.com)  
Skype: wg-2011 (only for calls, no chat)

## COPYRIGHTS

---

page 4	© WG-2011/ Anthony Duriez
page 9	© LT/ Régis Colombo- <a href="http://www.diapo.ch">www.diapo.ch</a>
page 9	© C.I.G.M/ <a href="http://www.espacemalley.ch">www.espacemalley.ch</a>
page 11	© Laurent Leyvraz
page 13	© Beaulieu Lausanne
page 14	© STV/FSG- Archives, Aarau
page 14	© Beaulieu Lausanne
page 15	© STV/FSG- Archives, Aarau
page 17	© WG-2011/ Anthony Duriez
page 20	© STV/FSG- Archives, Aarau
page 21	© STV/FSG- Archives, Aarau
page 23	© STV/FSG- Archives, Aarau
page 25	© Danny Jimmink
page 26	© STV/FSG- Archives, Aarau
page 27	© STV/FSG- Archives, Aarau



# PARTNERS

The World Gymnaestrada Lausanne 2011 thanks its partners for their precious support.

## GOLD PARTNERS



## SILVER PARTNERS



## BRONZE PARTNERS



## OFFICIAL SUPPLIERS



## TECHNICAL PARTNERS



## FRIENDS OF THE WG-2011



## PROVIDERS



## MEDIA PARTNERS



## GYMNASTIC PARTNERS



## INSTITUTIONAL PARTNERS

